



Community Center

0 25 50 100 Feet

Source Note: This product is reproduced from geospatial information prepared by City of Alpharetta GIS and Fulton County. City of Alpharetta data is developed and maintained solely for City business functions, and is not guaranteed to be accurate.

Dog Park

Private Property

Old Milton Parkway

Community Center

405'

152'

Legend

Water Fountains

Benches

Flag Pole

Street Lights Fixture Type

Post Top

Shoebox

Stage

City Owned Property

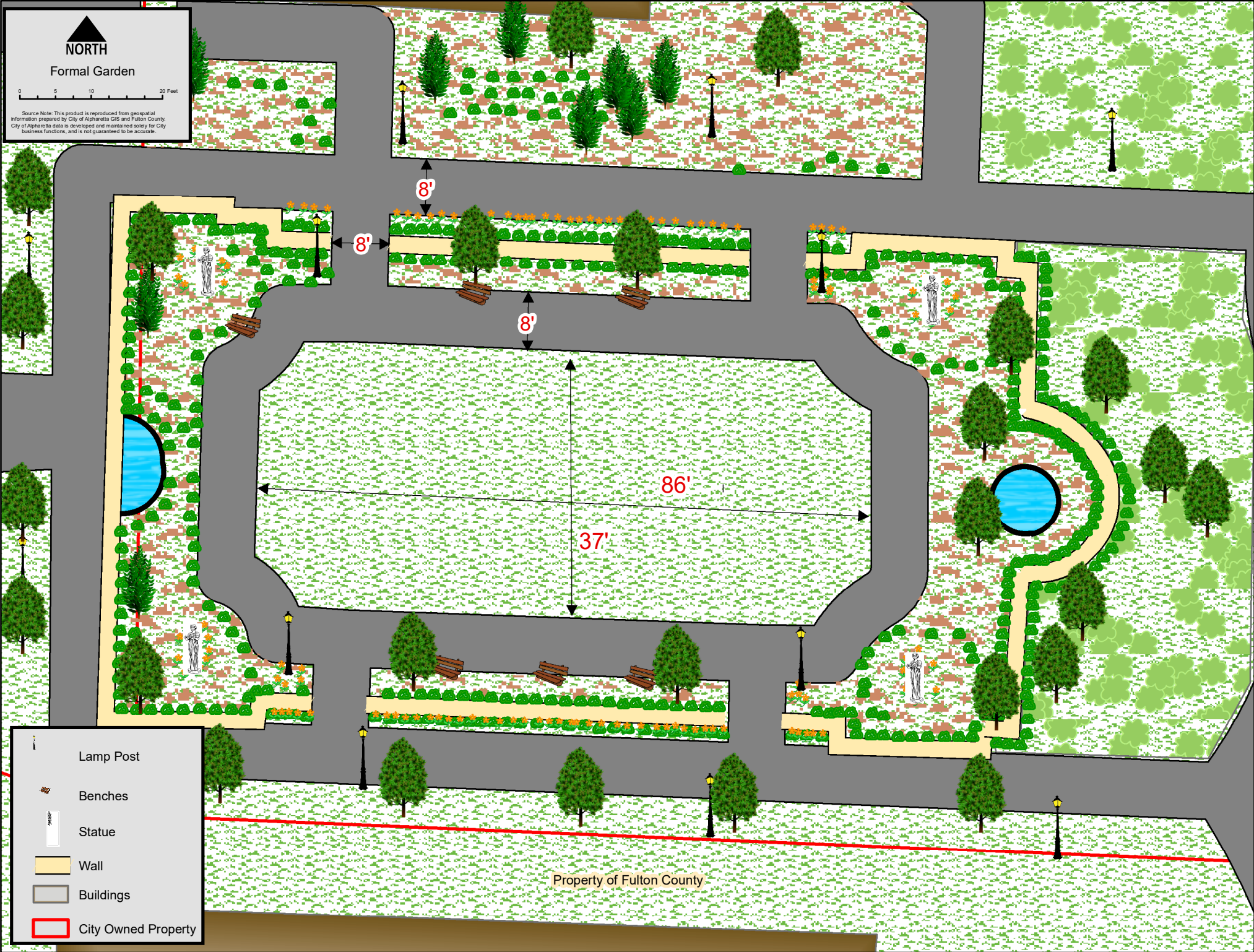
Roswell Street





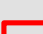

NORTH

Formal Garden

0 5 10 20 Feet

Source Note: This product is reproduced from geospatial information prepared by City of Alpharetta GIS and Fulton County. City of Alpharetta data is developed and maintained solely for City business functions, and is not guaranteed to be accurate.



-  Lamp Post
-  Benches
-  Statue
-  Wall
-  Buildings
-  City Owned Property

Property of Fulton County

CITY CENTER

Belle Isle Drive

North Main Street

Manning Street

Milton Avenue

Academy Street

36'

South Main Street

North Broad Street

North Broad Street

South Broad Street

South Broad Street

Market Street

Commerce Street






Park Plaza

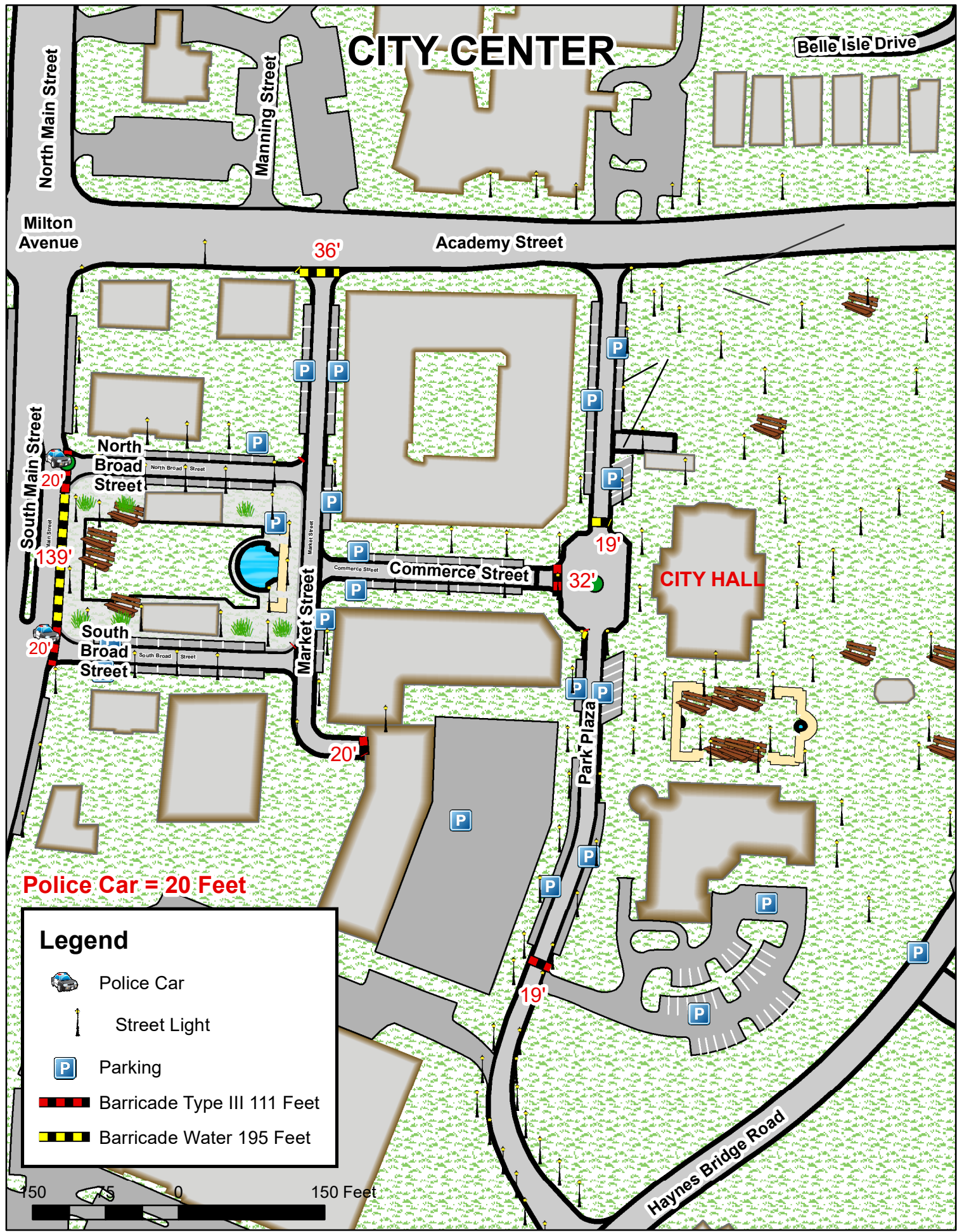
CITY HALL

Haynes Bridge Road

Police Car = 20 Feet

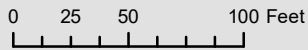
Legend

-  Police Car
-  Street Light
-  Parking
-  Barricade Type III 111 Feet
-  Barricade Water 195 Feet

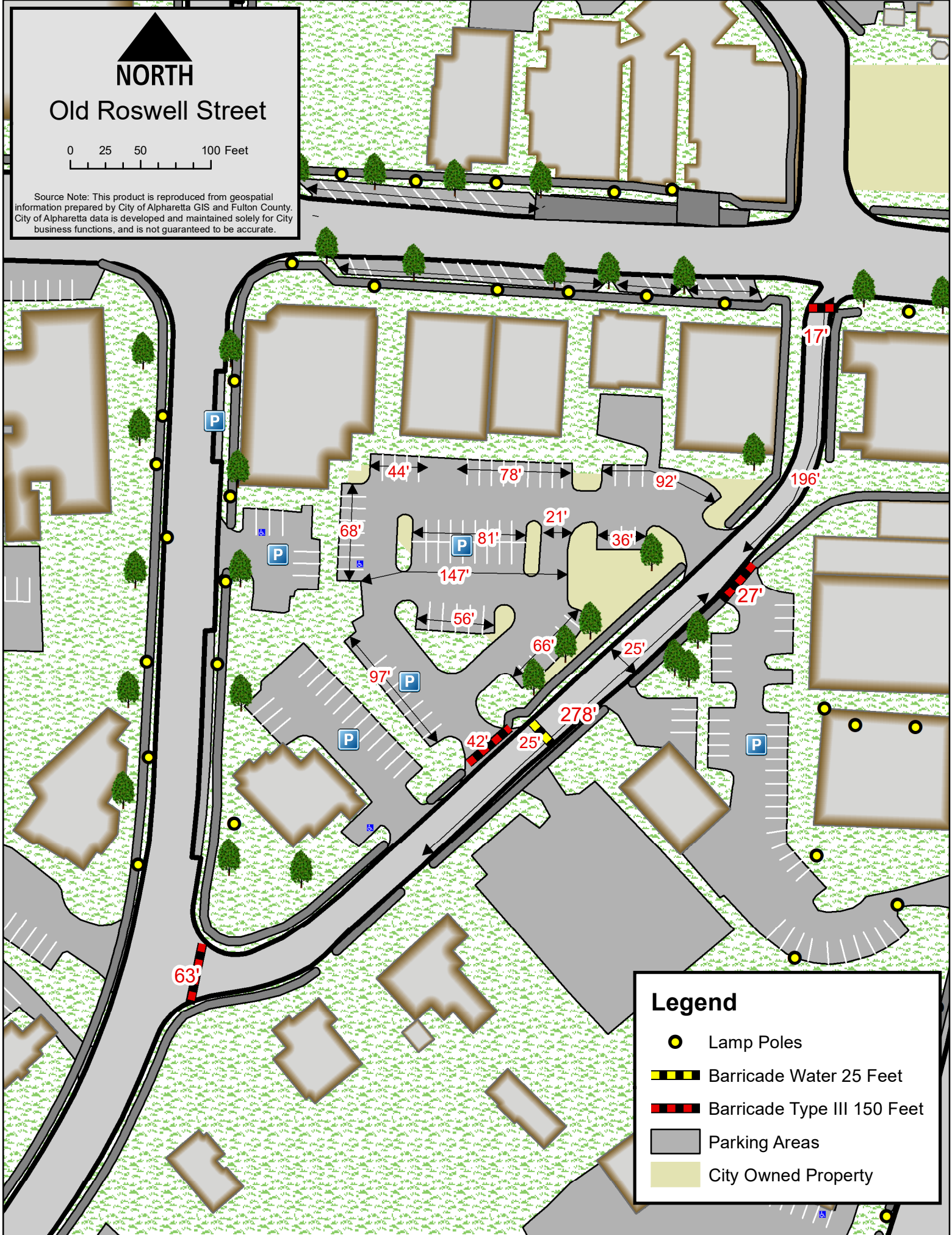




Old Roswell Street



Source Note: This product is reproduced from geospatial information prepared by City of Alpharetta GIS and Fulton County. City of Alpharetta data is developed and maintained solely for City business functions, and is not guaranteed to be accurate.





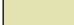
Legend

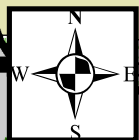
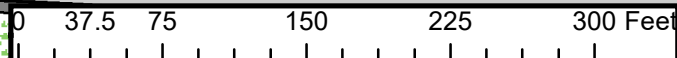
- Lamp Poles
- Barricade Water 25 Feet
- Barricade Type III 150 Feet
- Parking Areas
- City Owned Property

Canton Street



Legend

-  Lamp Posts
-  Barricade Water 120 Feet
-  City Owned Property





Milton Avenue

0 25 50 100 Feet

Source Note: This product is reproduced from geospatial information prepared by City of Alpharetta GIS and Fulton County. City of Alpharetta data is developed and maintained solely for City business functions, and is not guaranteed to be accurate.

Hotel Complex

Maddox Park

Hotel Entrance

Canton Street

North Main Street

Old Canton Street

91'

43'

159'

Milton Avenue

332'

44'

77'

63'

184'

44'

48'

Roswell Street

South Main Street

P

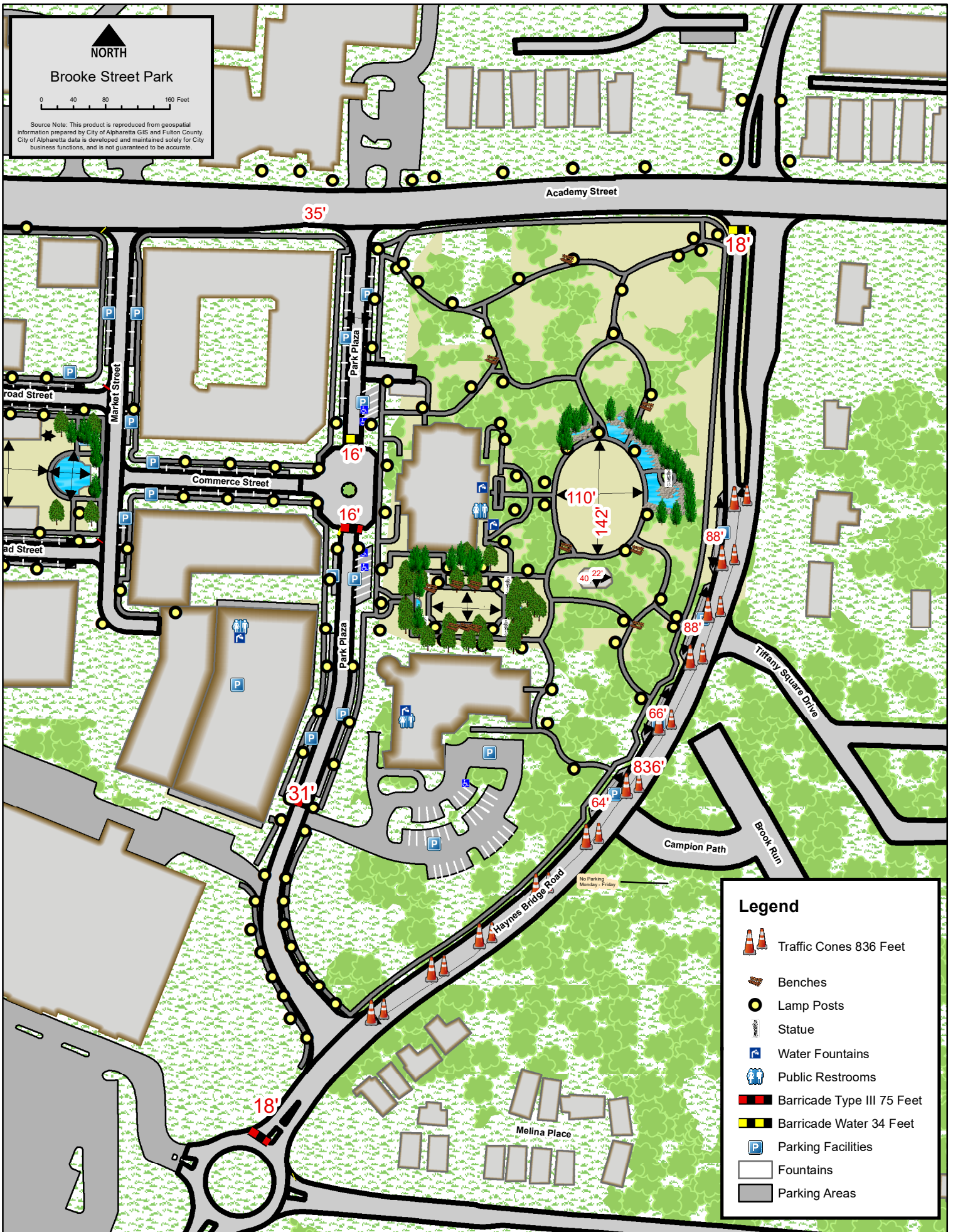
P

P

Old Roswell Street

Legend

- Lamp Posts
- Barricade Type III 108 Feet
- Barricade Water 164 Feet
- Hotel Complex
- City Owned Property



NORTH

Brooke Street Park

0 40 80 160 Feet

Source Note: This product is reproduced from geospatial information prepared by City of Alpharetta GIS and Fulton County. City of Alpharetta data is developed and maintained solely for City business functions, and is not guaranteed to be accurate.

- Legend**
- Traffic Cones 836 Feet
 - Benches
 - Lamp Posts
 - Statue
 - Water Fountains
 - Public Restrooms
 - Barricade Type III 75 Feet
 - Barricade Water 34 Feet
 - Parking Facilities
 - Fountains
 - Parking Areas

No Parking Monday - Friday



Town Green

0 25 50 100 Feet

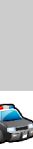
Source Note: This product is reproduced from geospatial information prepared by City of Alpharetta GIS and Fulton County. City of Alpharetta data is developed and maintained solely for City business functions, and is not guaranteed to be accurate.



Police Car (20') + Type III 28'

South Main Street

139'



Police Car (20') + Type III 23'

23'

North Broad Street

176'

149'

83'

South Broad Street

176'

176'

Market Street

Commerce Street



Legend



Police Car



Benches

Barricade Type III 119 Feet

Barricade Water 139'

Fountains

