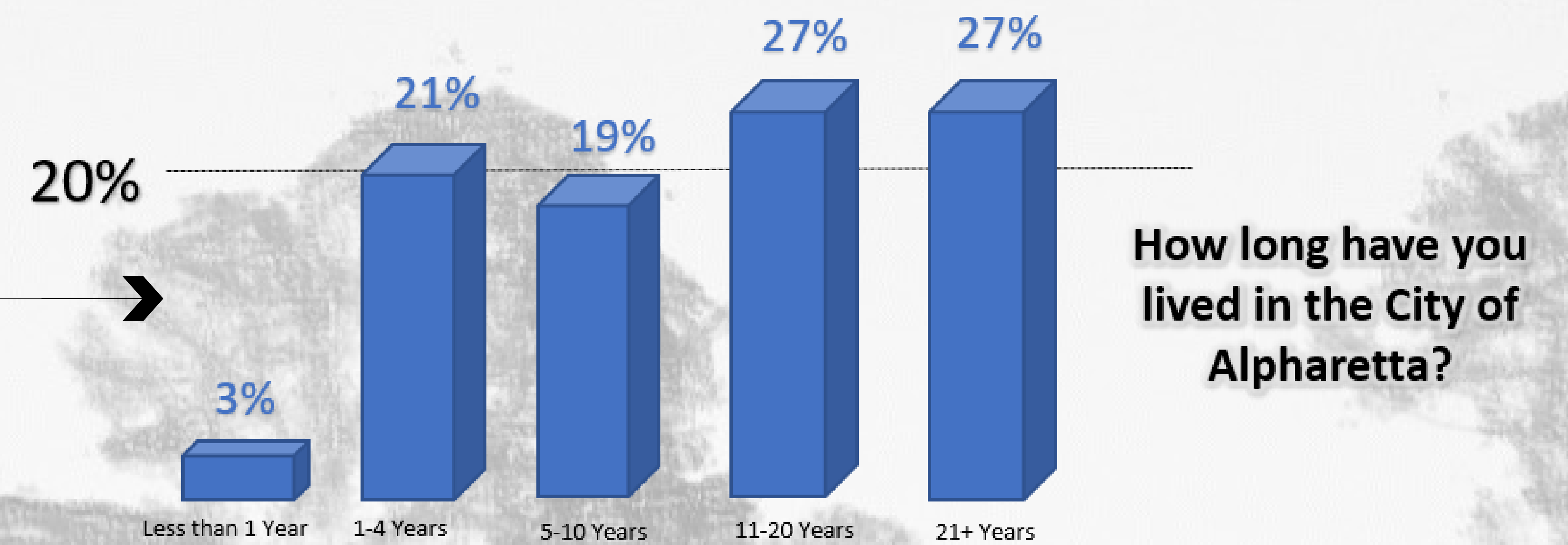


Survey Results

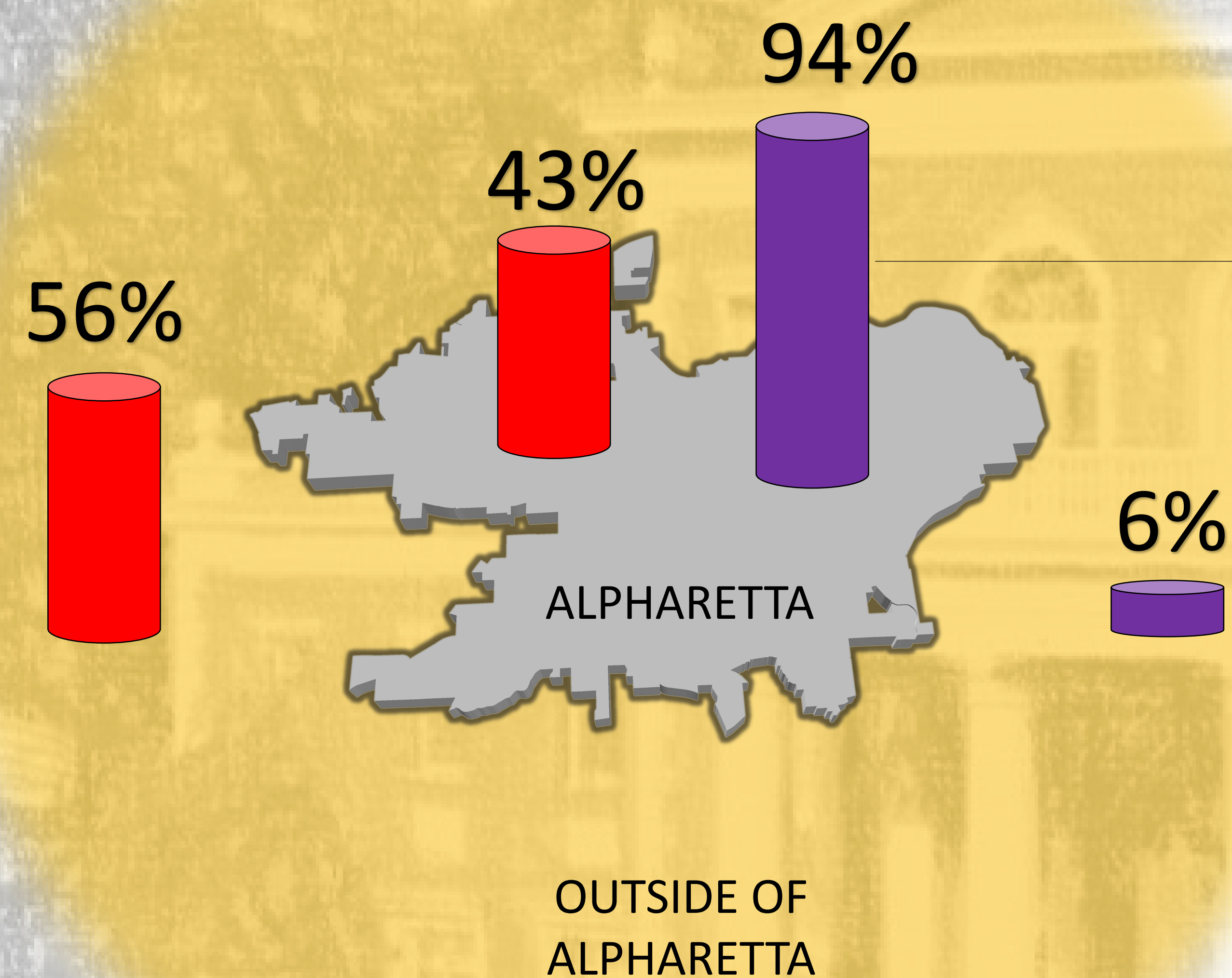
718 TOTAL RESPONSES

WHERE DO YOU WORK?

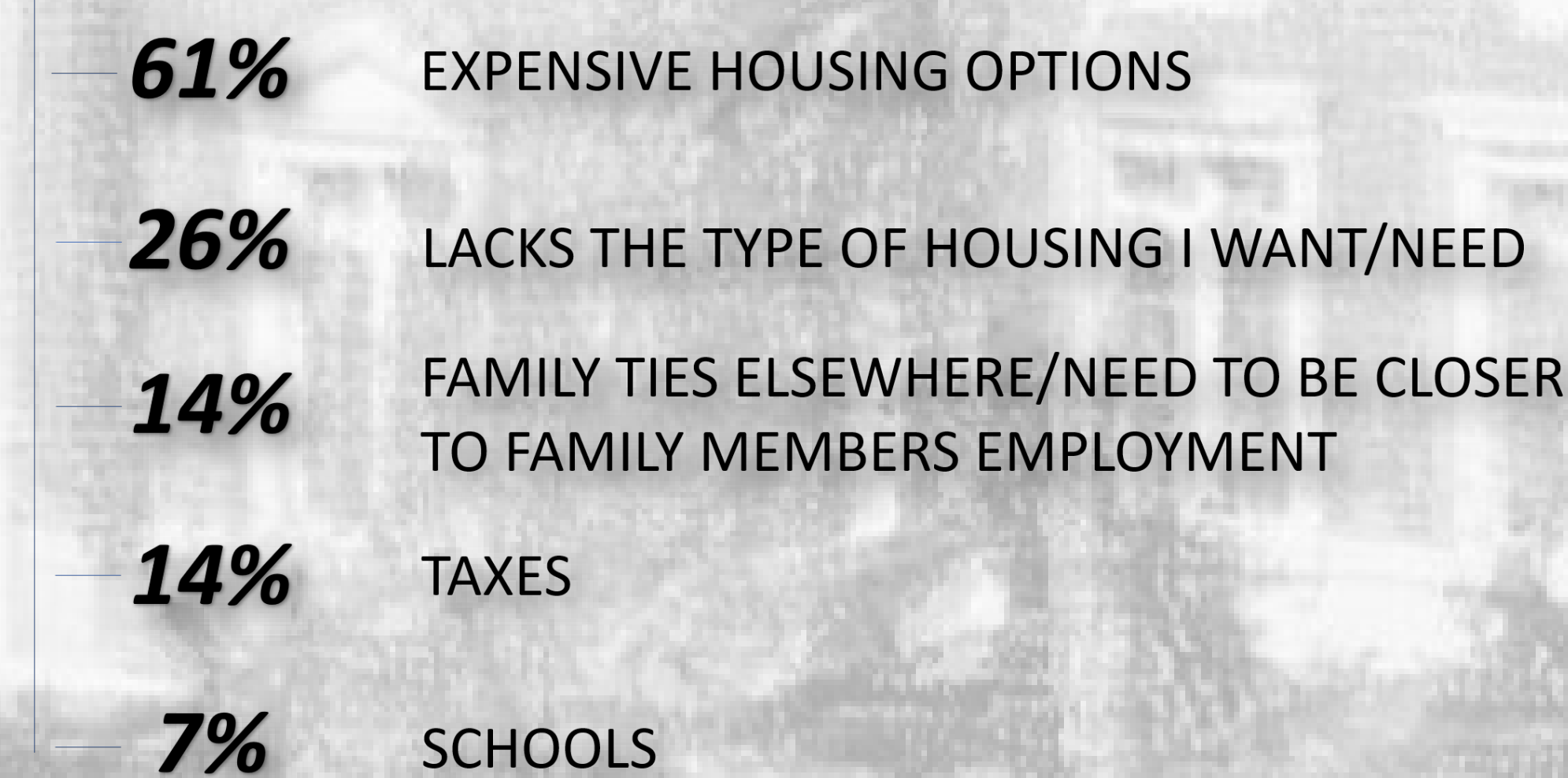
WHERE DO YOU LIVE?



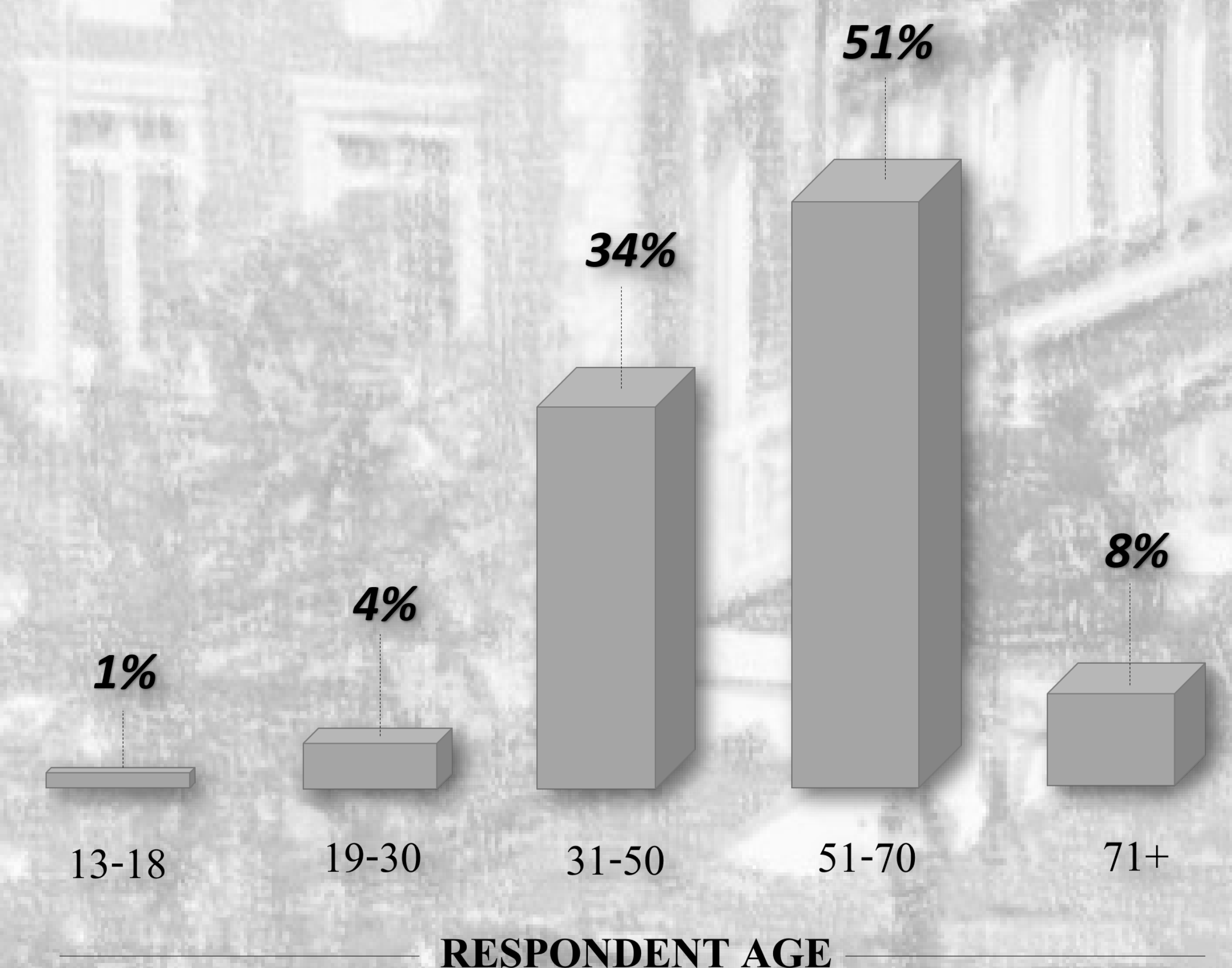
Were you born in Alpharetta?



WHAT FACTORS LED YOU TO DECIDE NOT TO LIVE IN ALPHARETTA?

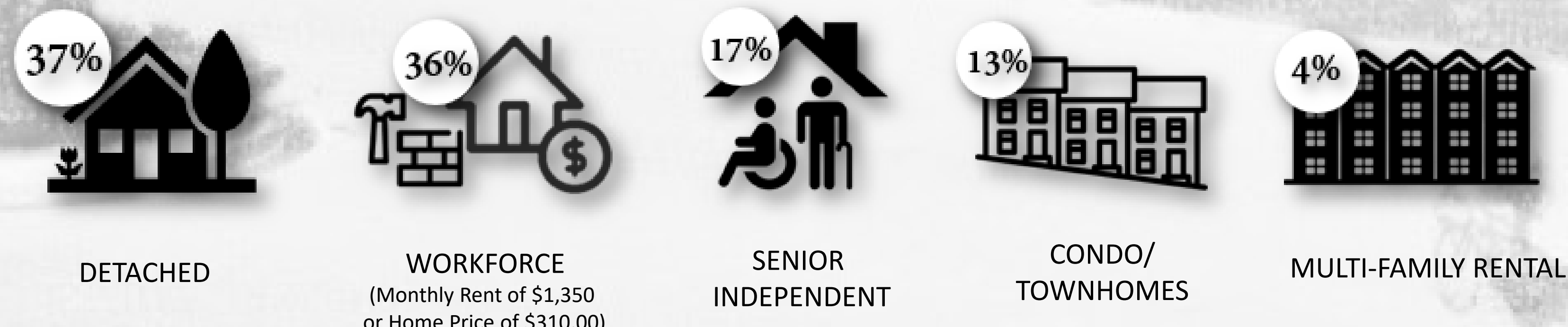


What Age Group Do You Belong To?



What kind of Housing Do we Need More of In Alpharetta?

*SELECT YOUR TOP CHOICE



Survey Results

718 TOTAL RESPONSES



What are your reasons for choosing to live in Alpharetta?
(More than one answer is allowed)

51%
Parks/Recreation

42%
Schools

29%
Proximity to
Family/Friends

28%
Community & Historical/
Cultural Sites

27%
Employment

What is the most important **quality of life factor** that the local government can impact?

- 684 Neighborhood safety & security
- 588 Availability and access to walking/biking trails
- 333 Sense of community, placemaking
- 329 Reducing Traffic Congestion
- 303 City Infrastructure (Street Lights, Sidewalks, etc.)
- 239 Access to quality public education

*The numbers represent a weighted aggregate of the first, second & third choices for each respondent

What is the most important **Land Use Topic/Issue** that Alpharetta needs to address?

- 859 Creating walkable communities/areas
- 662 Commercial overdevelopment
- 661 Planning for vacancies &/or redevelopment of the retail environment
- 654 Residential overdevelopment
- 522 Providing additional park and open space
- 355 More housing options (types and price points)

Survey Results

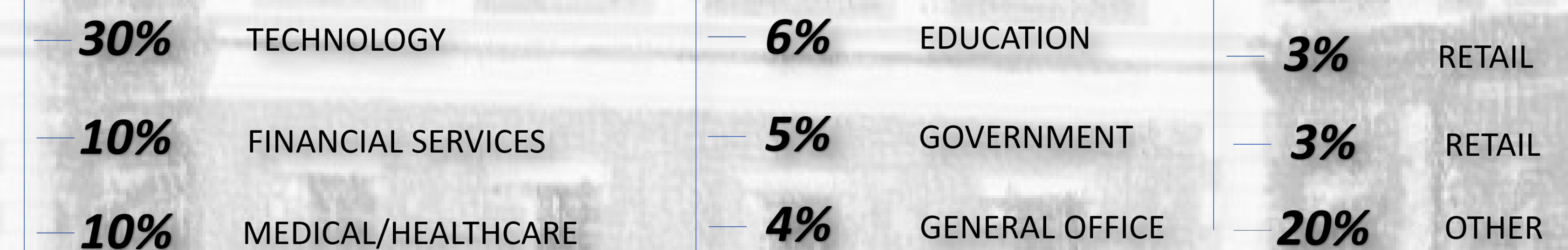
What improvements does Alpharetta need to encourage the business community to make to their office environments to ensure future competitiveness?

**YOU COULD VOTE FOR MORE THAN 1 OPTION

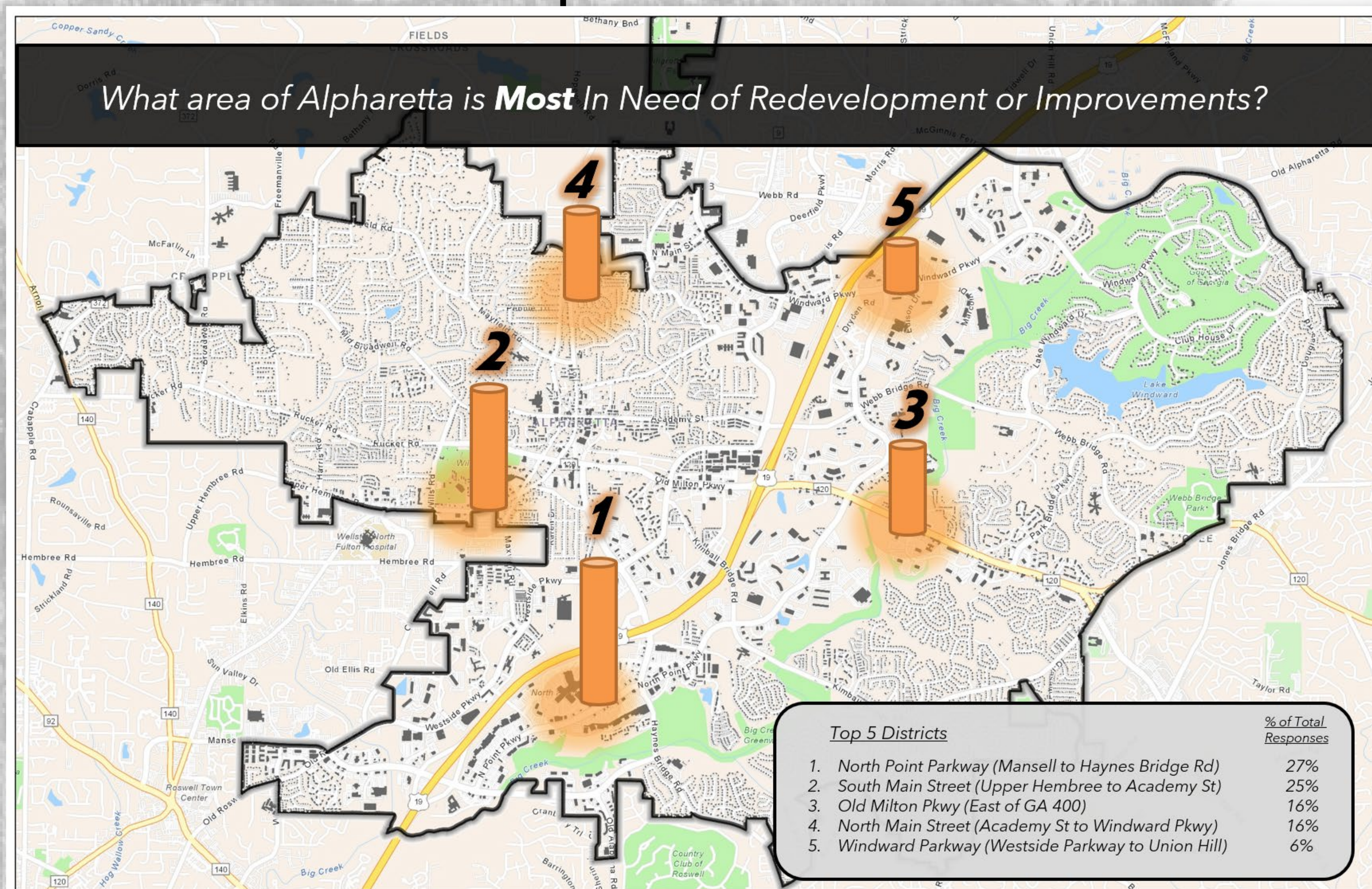
OFFICE INVESTMENTS



WHAT FIELD DO YOU WORK IN?



What area of Alpharetta is **Most** In Need of Redevelopment or Improvements?



How aware are you of past & on-going planning efforts to revitalize the North Point commercial area?

These include:

- North Point Placemaking Plan
- North Point Livable Centers Initiative
- Alpha Loop Feasibility Study & Greenway Connection



85% of respondents were aware of at least one of these efforts, while **24%** of respondents were aware of all 3.

Survey Results

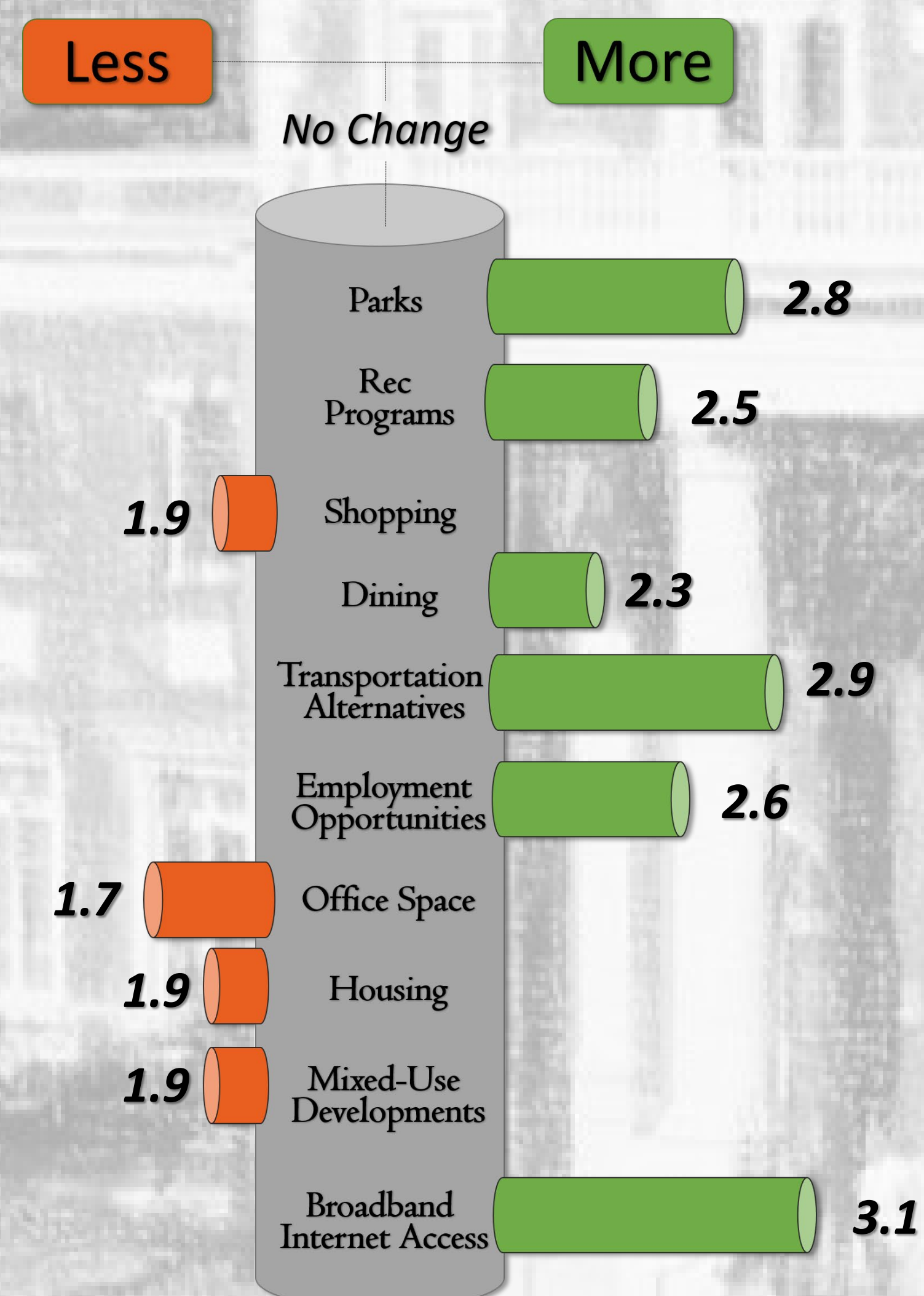
718 TOTAL RESPONSES

In the past year, how frequently have you participated in the following:

Do we need **MORE** or **LESS** of the following?

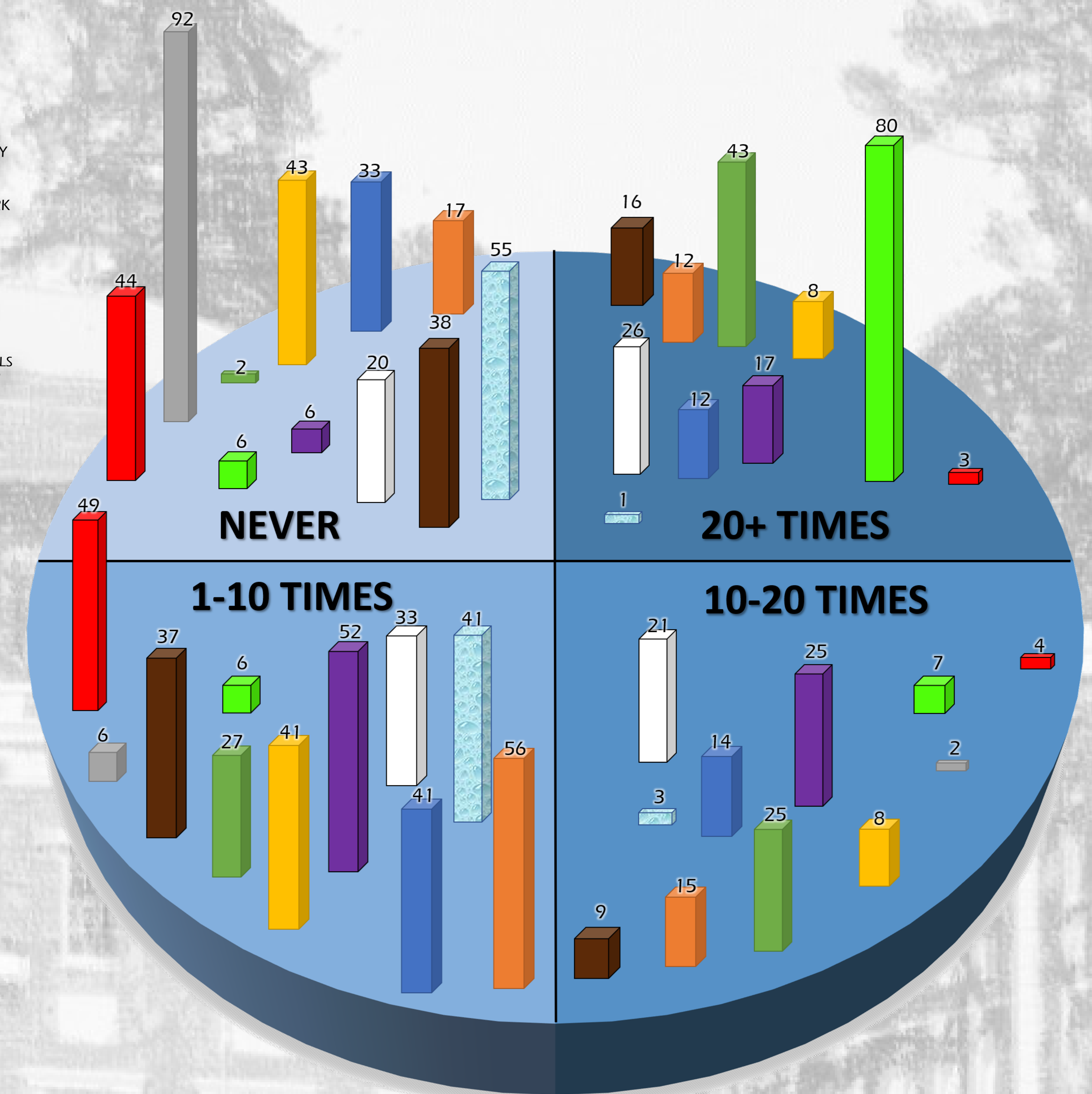
SCORING OPTIONS

0 A LOT LESS 1 2 NO CHANGE 3 4 A LOT MORE



- USED PUBLIC LIBRARIES OR THEIR SERVICES
- USED RECREATION CENTERS
- PARTICIPATED IN A REC PROGRAM OR ACTIVITY
- VISITED A NEIGHBORHOOD PARK OR CITY PARK
- RIDDEN A LOCAL BUS WITHIN ALPHARETTA
- ATTENDED A MEETING OF LOCAL ELECTED OFFICIALS OR OTHER PUBLIC MEETING
- WATCHED A MEETING OF LOCAL ELECTED OFFICIALS OR OTHER PUBLIC MEETINGS ON CABLE TELEVISION
- READ AN ALPHARETTA NEWSLETTER
- VISITED THE CITY OF ALPHARETTA WEBSITE
- RECYCLED USED PAPER, CANS OR BOTTLES FROM YOUR HOME
- VOLUNTEERED YOUR TIME TO SOME GROUP OR ACTIVITY IN ALPHARETTA

Shows the percentage of respondents



What is the main way you currently receive information from the City?



How would you prefer to receive information from the City?

With this question more than one choice was allowed, each option shows the percentage of respondents who selected it

