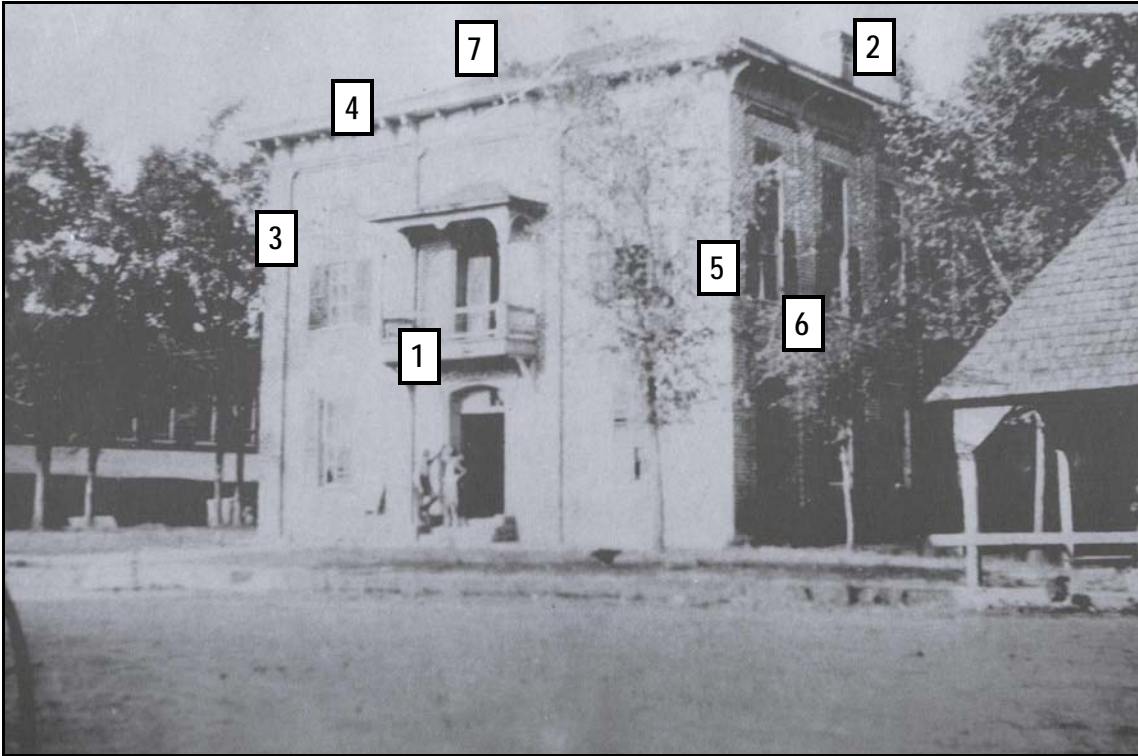


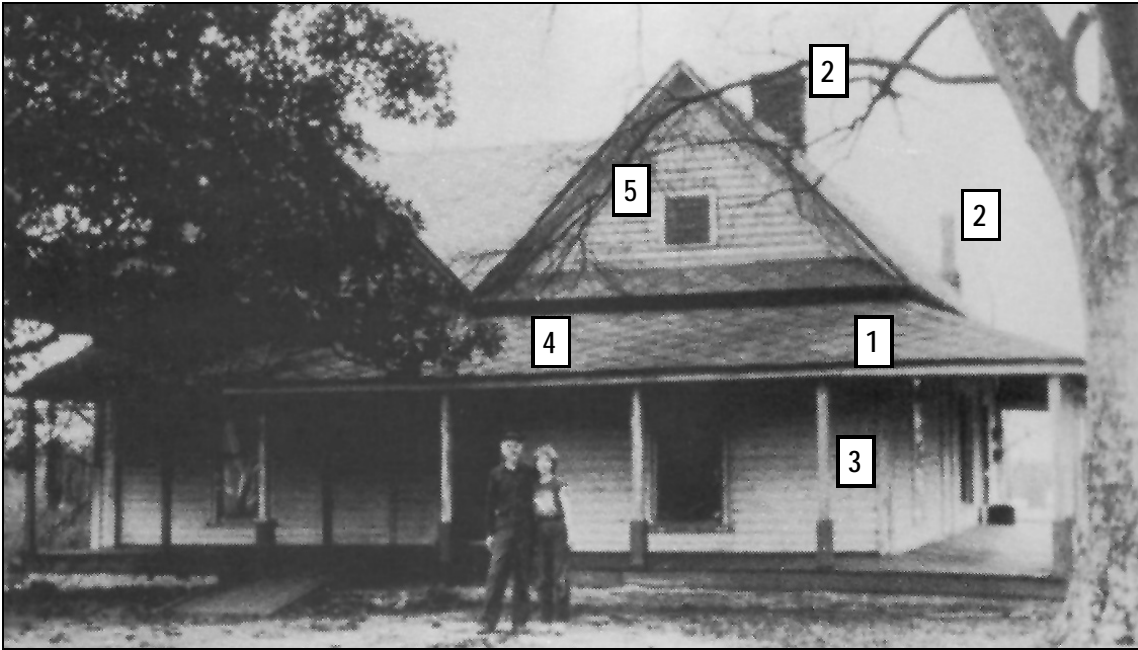
1. **Colonnade:** A row of columns supporting a roof structure.
2. **Column:** A vertical support, usually similar in style to the ionic order with a simple base and capital and smooth round shaft.
3. **Two Story Porch:** A covered pedestrian walkway on the first level that supports an outdoor covered balcony on the second level.



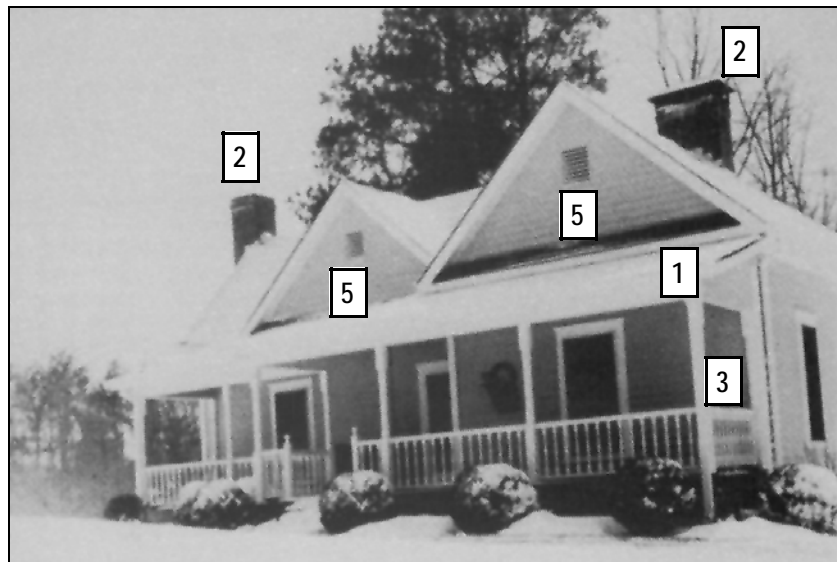
1. Projecting balcony with brackets has simple balustrade and roof. Balcony serves as an entry feature and also provides weather protection for the front door.
2. Chimneys above roof line appear to be an extension of the decorative columns on the wall below.
3. Decorative columns in relief (similar to pilasters) suggest a larger scale for this small building.
4. Brackets or exposed rafters along the roofline.
5. Awnings at windows.
6. Appearance of double height windows.
7. Pitched roof.



1. Decorative balustrade with turned, wooden balusters in the rail.
2. Two story porch.
3. Decorative brackets with bric-a-brac.
4. Appearance of symmetry on front elevation.
5. Painted surfaces.

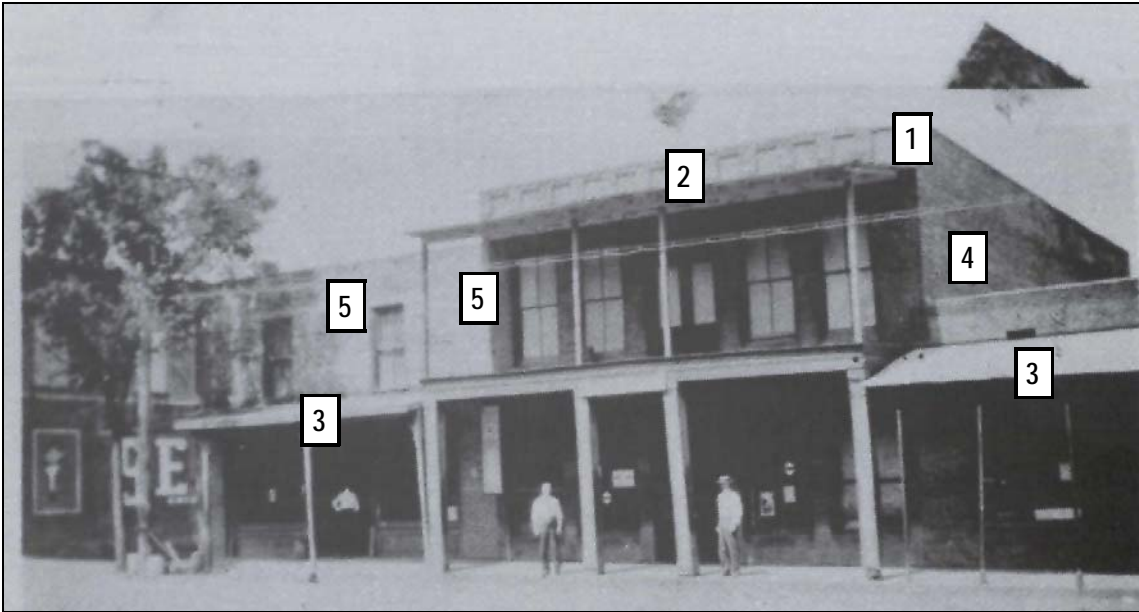


1. Overhang with columns protecting exterior windows.
2. Chimneys
3. Square posts
4. Fish scale shingles.
5. Small square or rectangular window in gable end.

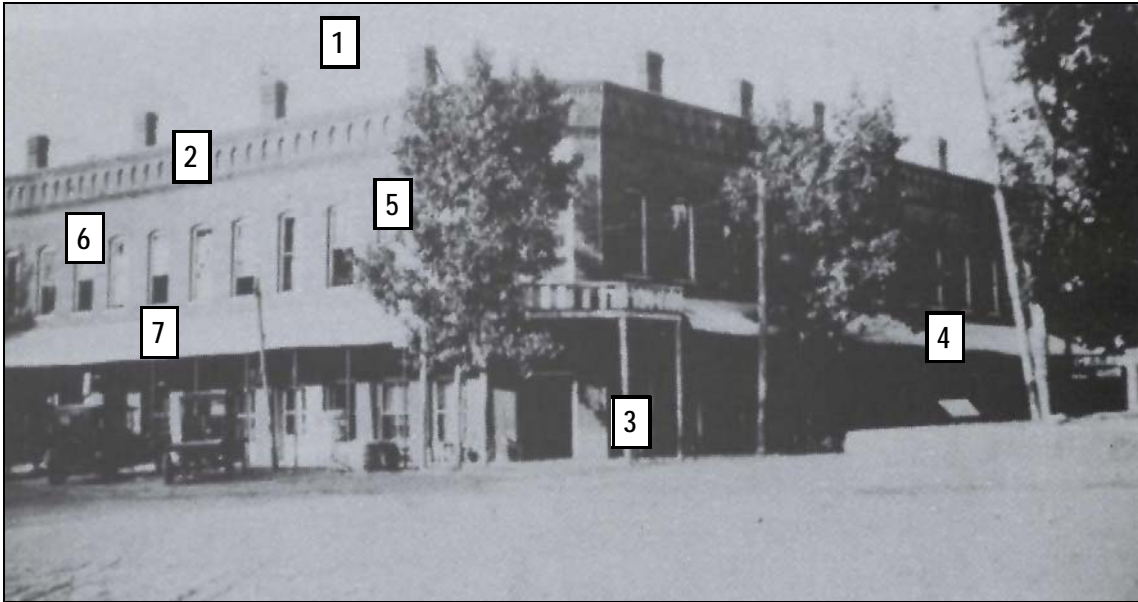




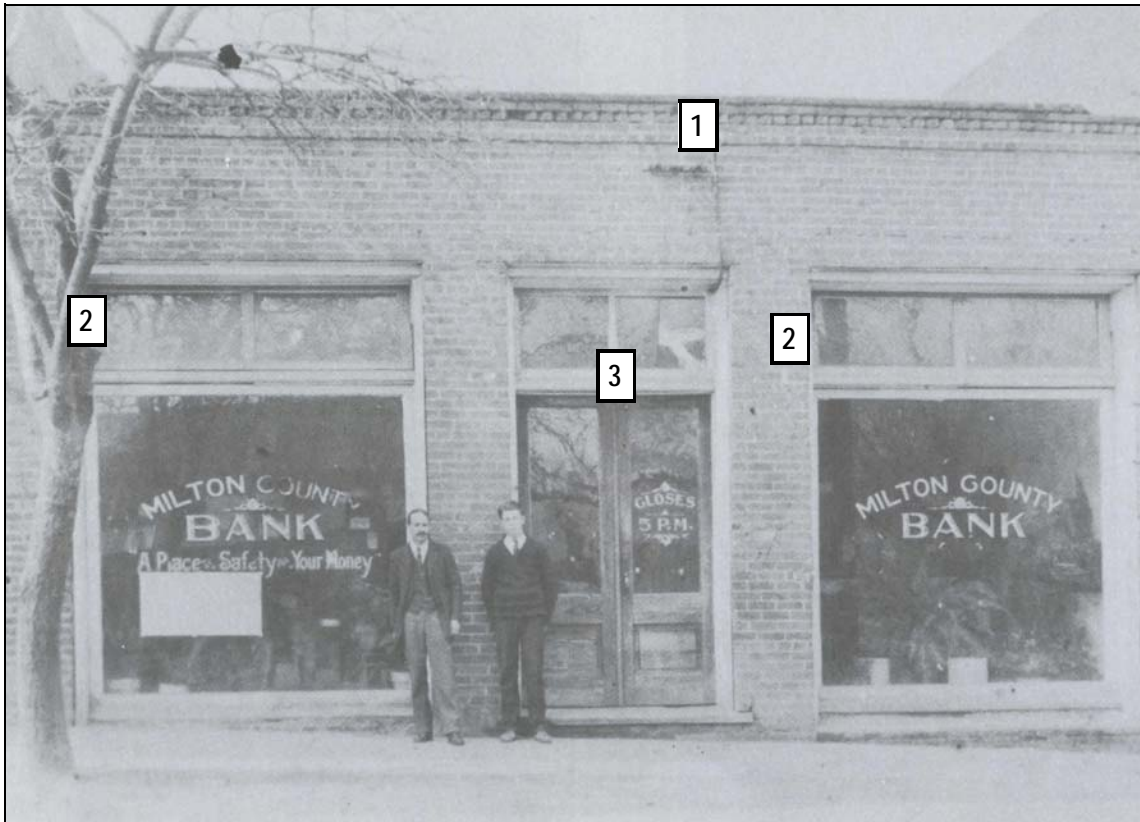
1. Flat roof with cornice line on commercial structure.
2. Brick exterior material.
3. Lintels and sills accentuated by change in material.
4. Signage limited to area within decorative brick coursework.
5. Colonnade of simple, square columns.
6. Chimneys.



1. Decorative cornice
2. Two story porch.
3. Covered walkway for pedestrian weather protection
4. Variety in building heights.
5. Variety in window sizes.

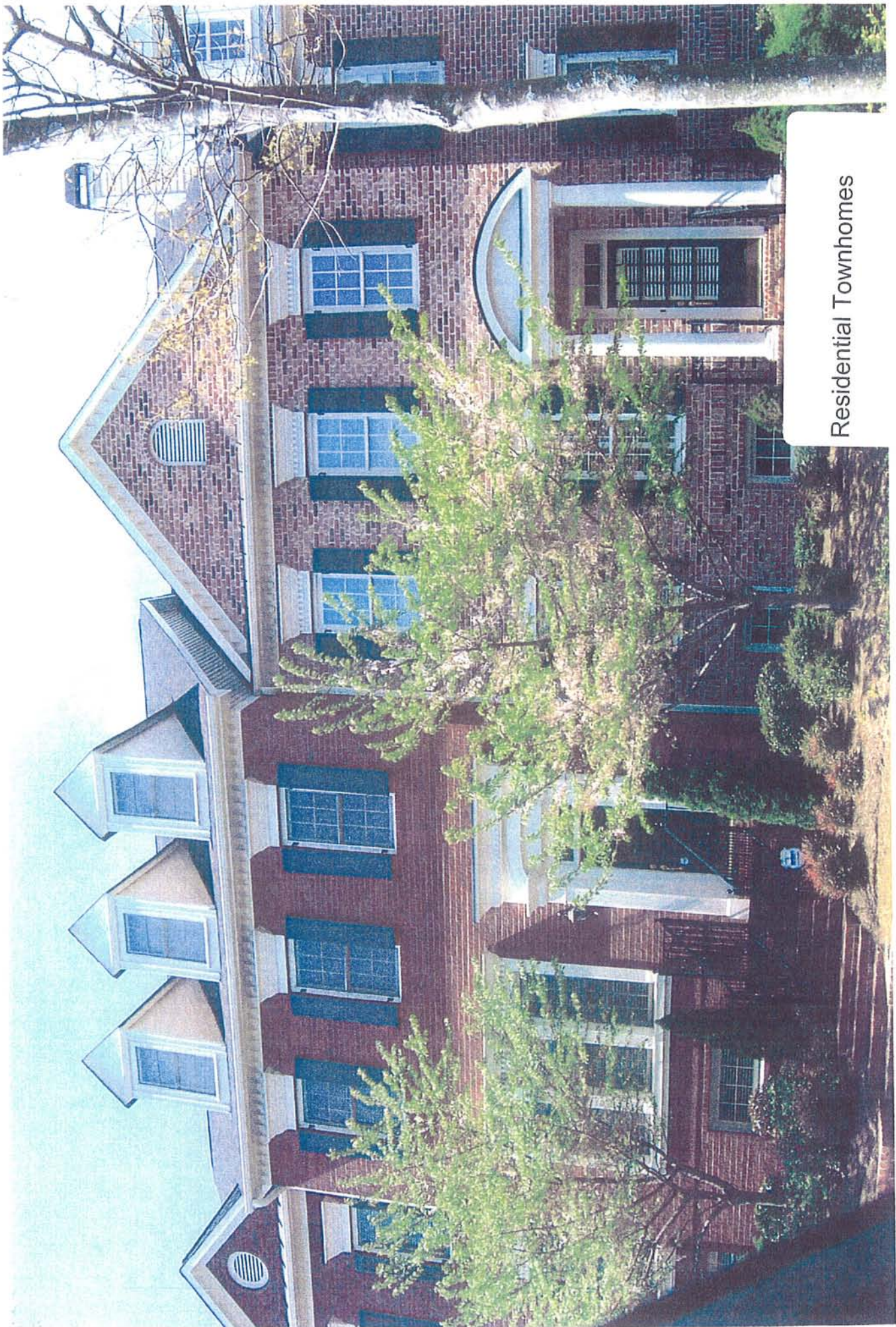


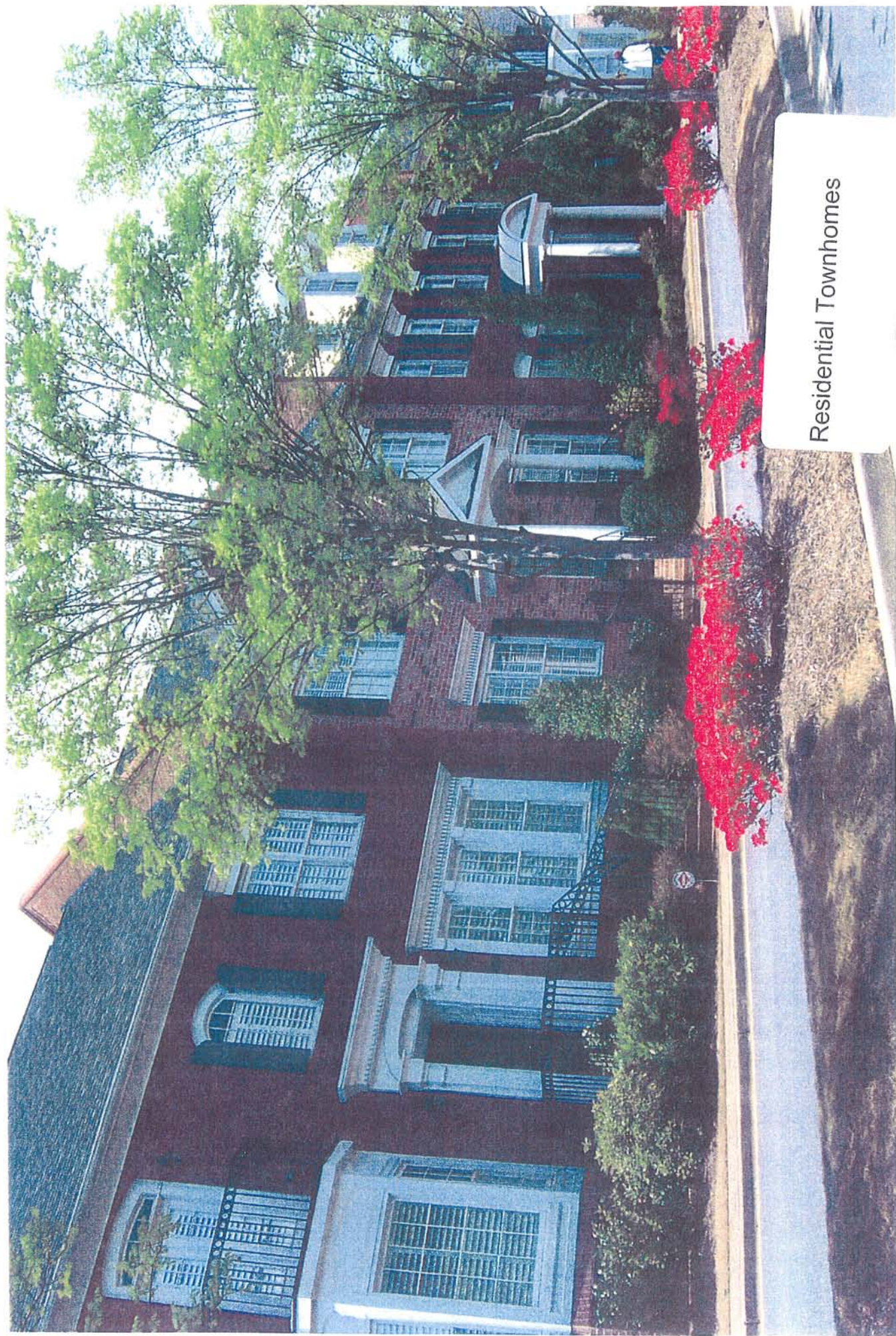
1. Multiple chimneys.
2. Decorative cornice.
3. Corner entry.
4. Covered walkway.
5. Repetitive windows.
6. Brick exterior material.
7. Awnings



1. Decorative brick cornice.
2. Transom windows.
3. Double door at entry.

Residential Townhomes





Residential Townhomes