



Approved 5K Race Routes

Please note that all morning road races must start by 7:30 am.

If available, evening road races must start at 7:30pm. Friday and Saturday nights unavailable.

- 1) **Alderman Dr (Windward) Route** – Road
 - Double loop 5K

- 2) **Avalon Route** – Road Race
 - **Will require Avalon approval** – please seek this prior to applying
 - Early morning only before shops open
 - Sunday nights unavailable

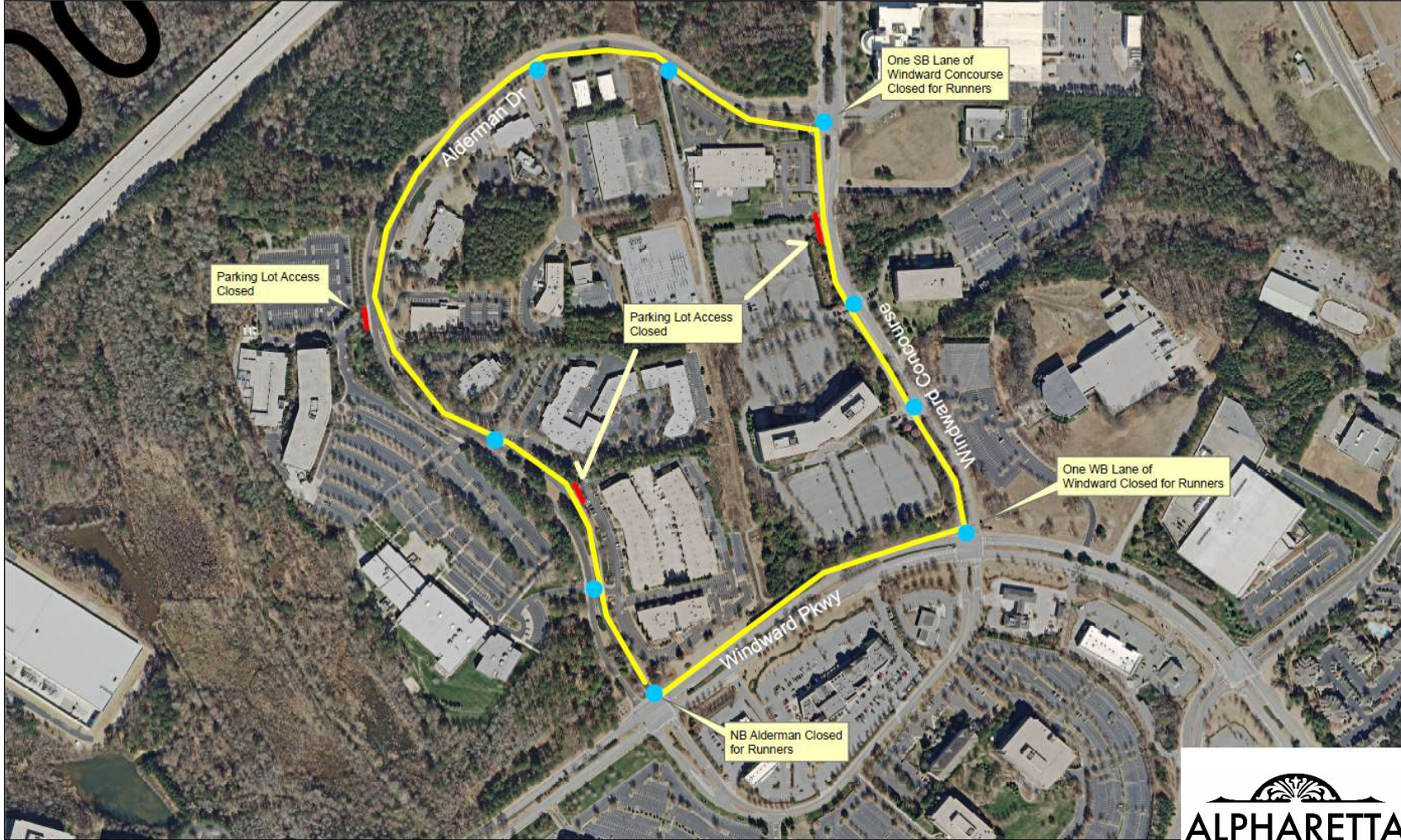
- 3) **Old Milton Pkwy Route** – Road
 - Start and stop at pool area at Wills Park
 - Could be done at night or morning
 - Unavailable Saturday mornings, end of January through Thanksgiving
 - Availability based on recreation programming

- 4) **North Point Route** – Road
 - **Will require North Point Mall approval** – please seek this prior to applying
 - Change of start and stop locations will need recertification from Public Safety
 - Morning races allowed before shops open

- 5) **Webb Bridge Park Route** – Trail
 - 5K trail within park (via 3x loop)
 - Max capacity of 250 runners/vehicles in lot
 - Only available Sunday mornings and must be wrapped up/packed out by 12pm
 - Baseball fields A and B available for start line set up
 - Availability based on recreation programming

A cost estimate for personnel and equipment will be provided upon submission of Special Event Permit Application

ALDERMAN DR (WINDWARD) ROUTE – avg cost ~\$4700+

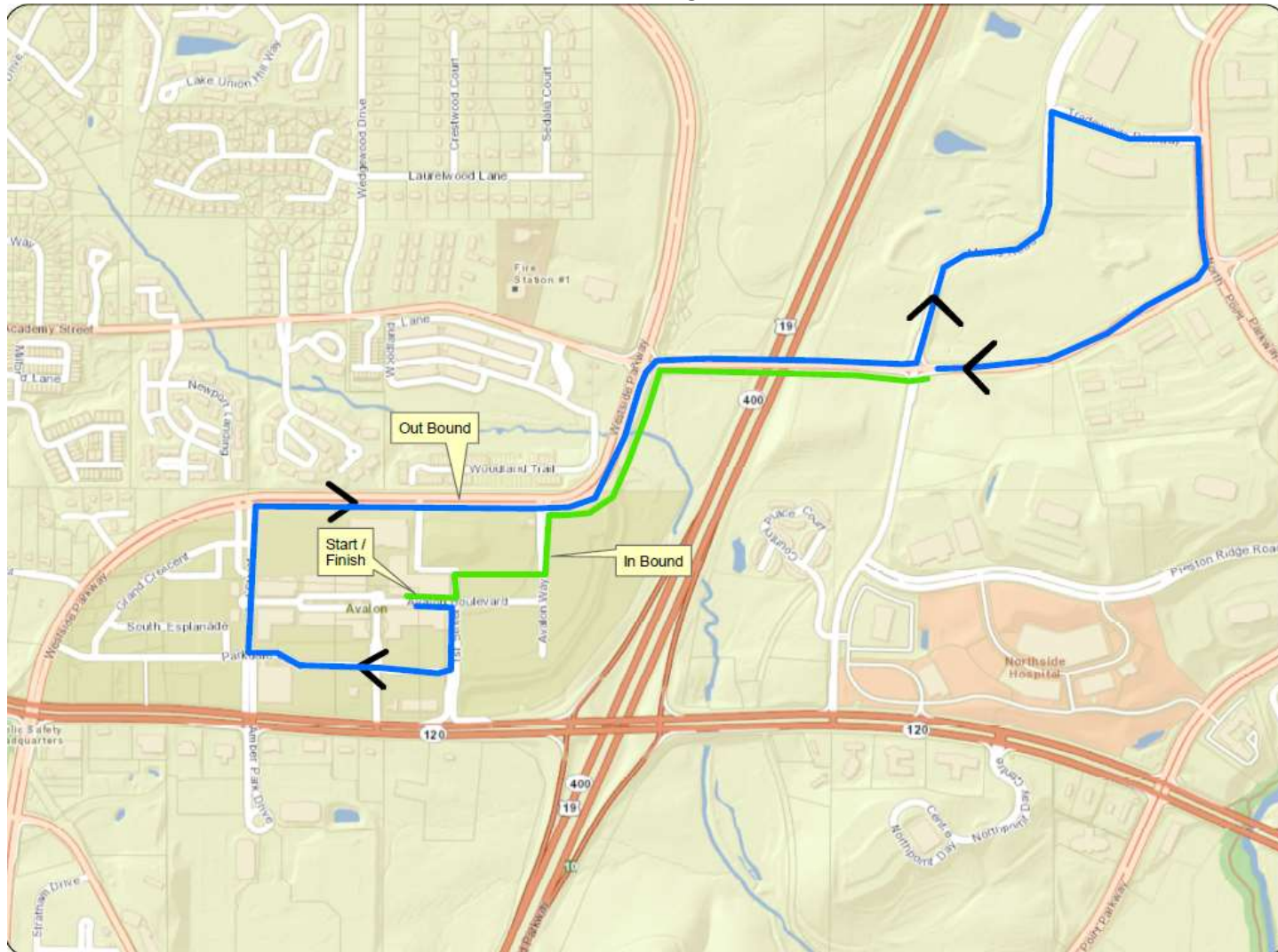


**Alderman Dr
Double Loop 5K**

● **Traffic Control Positions (9)**
2 Motor Officers
(Total 11 Positions)

Fire EMT - 2 Positions
Public Works - 3 Positions

AVALON ROUTE - avg cost ~\$6500+



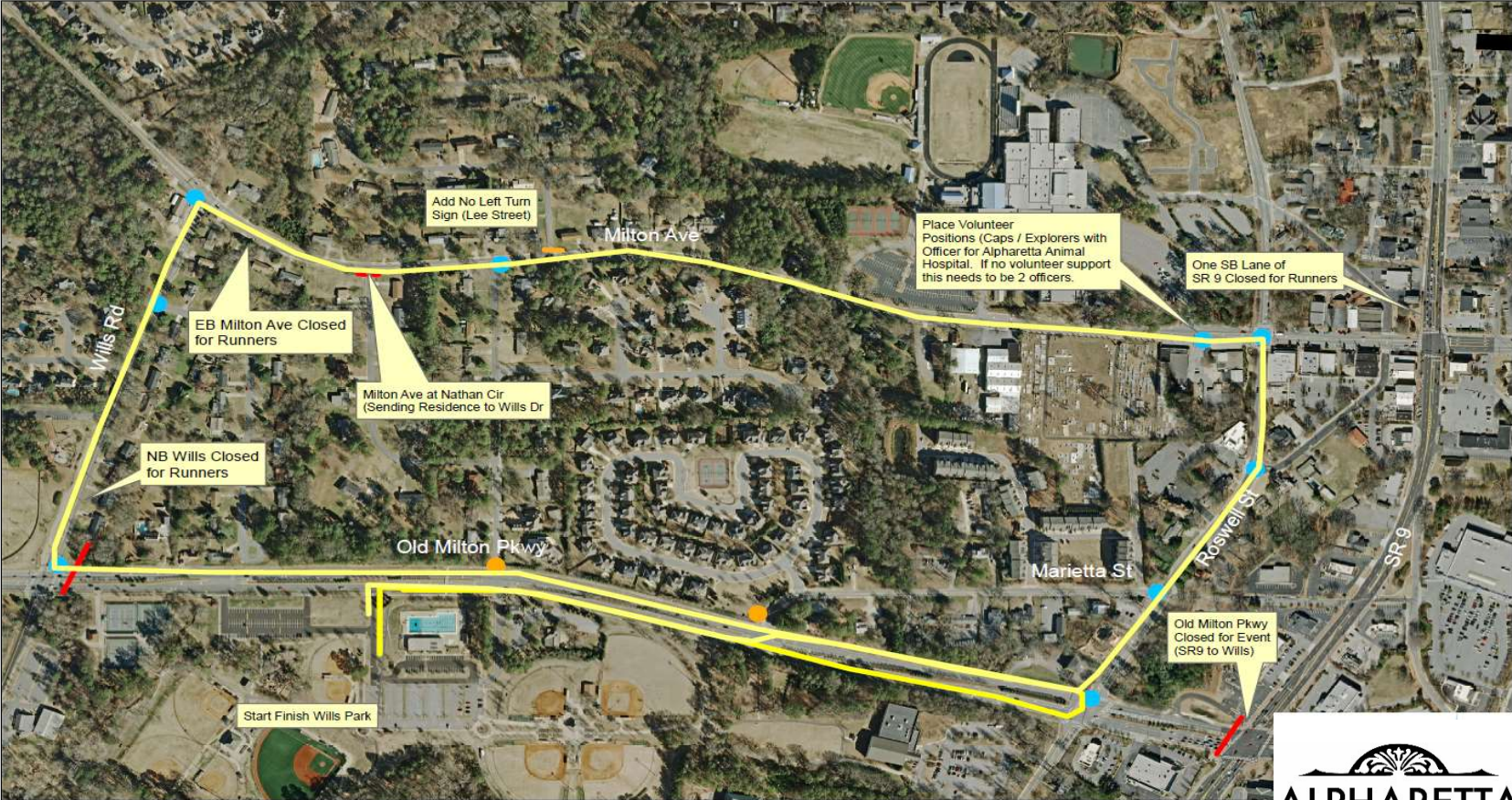
Avalon Route
5K Single Loop

Traffic Control Positions (8)
2 Motor Officers – 1 Lead / 1 Marshall
(Total 10 Positions)

Fire EMT – 2 Positions
Public Works – 4 Positions



OLD MILTON PKWY ROUTE - avg cost ~\$6400+



Old Milton Pkwy Route 5 and (10 K Double Loop)

- **Traffic Control Positions (10)**
- 2 Motor Officers - 1 Lead / 1 Marshall**
- (Total 12 Positions)**

Fire EMT - 4 Positions

Public Works - 3 Positions



NORTH POINT ROUTE – avg cost ~\$6500



North Point Pkwy Route ●
5 and (10K Double Loop)

Traffic Control Positions (10)
2 Motor Officers —1 Lead / 1 Marshall
(Total 12 Positions)

Public Works - 3 Positions
Fire EMT - 4 Positions



WEBB BRIDGE PARK ROUTE – avg cost ~\$550



WEBB BRIDGE PARK

4780 Webb Bridge Road
City of Alpharetta, Georgia



Webb Bridge Park Route

5K Triple Loop

Fire EMT – 2 Positions

Instructions for use:

- Use lower soccer field parking area
- Set up start/finish line between baseball fields A & B
- Fields A & B are unlocked for large group gatherings or event activities
- Electricity available via outlets on restroom building (marked with yellow dot)

